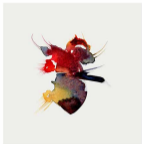
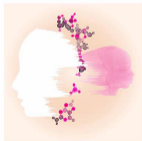




Re-imagined cover for New Scientist focusing on how the moon can affect our health and sleep  
POWER - abstract heart in watercolor, created in response to Rupi Kaur's poetry



Artwork created in response to the article  
'Genomic medicine is deeply biased towards white people'  
- New Scientist, January 2021.  
Figurative graphite sketch depicting the importance of  
movement on health.



**ISHER DHIMAN**  
Artist, Creator, Visionary